

Address Board - Protector CUT1007 & CUT3001

GENERAL

Brand Cimbria
Model Address Board - Protector CUT1007 and CUT3001

The Unitest system can be used in all types of grain storage facilities and can be installed in both new and existing installations. The temperature is constantly monitored by means of a number of sensors which are fitted in carrying cables specially designed for installation in harsh environments.

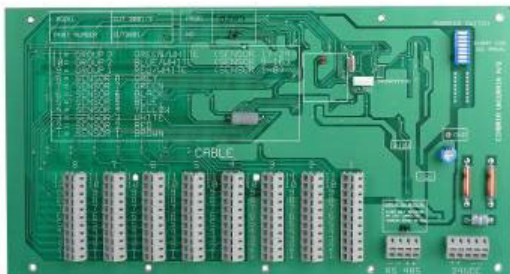
CUT1007 - Cabinet & Address board



Address board (incl. cabinet – IP66) dimensions:

- Length 500 mm
- Height 300 mm
- Depth 155 mm
- Weight 9 kg

CUT3001-0001 - Address board



Address board (without cabinet) dimensions:

- Length 325 mm
- Height 175 mm
- Weight 0.4 kg

Address boards

In principle there is only one type of address board. The address board is available with cabinet CUT1007 and without cabinet CUT3001 (spare part).

Bus cable (CUT1028)

The bus cable (from interface to / through each address board) requires a 4-wire-line for communications and supply.

Recommendation:

2 x 2 x 0.5. Twisted pair shielded cable

Specification

Measuring range	-8° to +90°C
Operating voltage	24 VDC
Current consumption	Approximate 10 mA (stand by)
Communication	RS485
Protocol	Cimbria CUT3001
Protocol characters	ASCII
Brad rate	9600, 8 Databit, 1 Startbit, 1 stopbit, No parity
Maximum of address boards per bus	32
Bus cable	2 x 2 x 0.5. Twisted pair shielded cable
Address setting	1-250 (Dip switch)
Processor	Flash type. Software up-grade possible

Extension cables (CUT1025)

The extension cable (from Heavy-duty and standard cables to address boards) required a 12-wire-line.

Recommendation:

6 x 2 x 0,6. Twisted pair cable

Sensor cables:

The length and number of sensors in one sensor cable are custom specified.

Specification

Sensor	NTC with diode
Norm values	3000 ohm / 25°C
Range	-20°C to +85°C
No. of sensors	Max. 24

Interface type:

As a standard, 2 different interfaces are available. Each type of interface may hold 1-4 bus lines.

Specification

Communication	RS232 on PC RS485 on address board
Number of busses	1-4
Number of address boards per bus line	Max. 32
Max. numbe of cables	1024
Max. no of sensors	24576
Over voltage protection	Yes

Further information about the Interfaces can be obtained from separate data sheet no. 106.02.07.