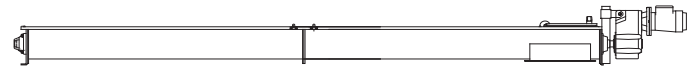
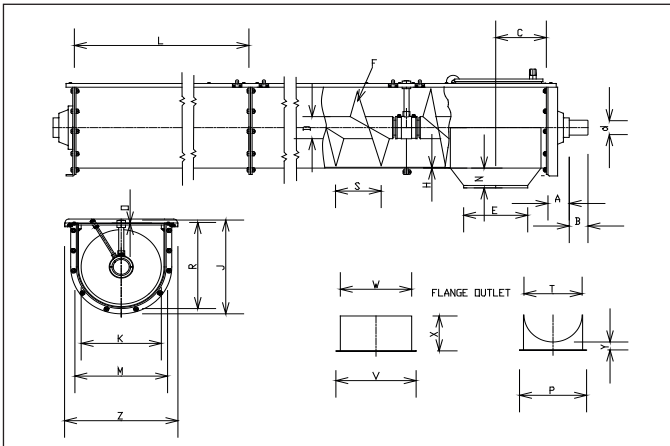


SCREW CONVEYOR TYPE SU

Design

The trough screw conveyor type SU is designed for efficient and reliable handling of powders and granular bulk materials in industrial plants. It is a dust-proof modular steel construction with sections of 2 m and inner screw of 4m/section.

It is supported by hang-bearings every 4 meters. The design of the support bearing allows all wearing parts to be changed easily. The standard support bearing material is beechwood, alternative plastic, bronze or ball bearings.



Conveyor type SU - DIMENSIONS

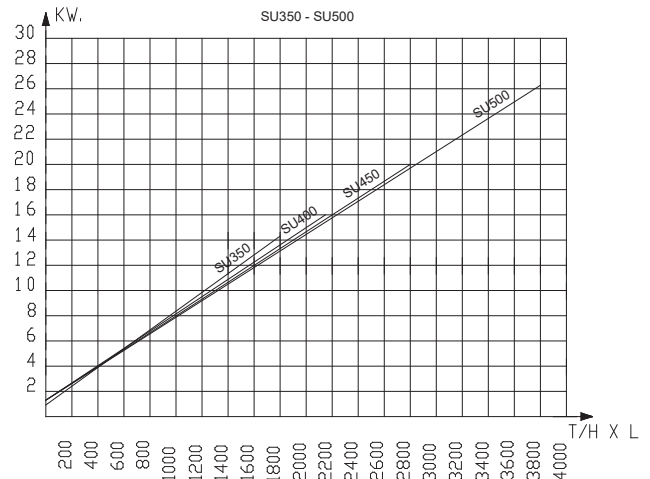
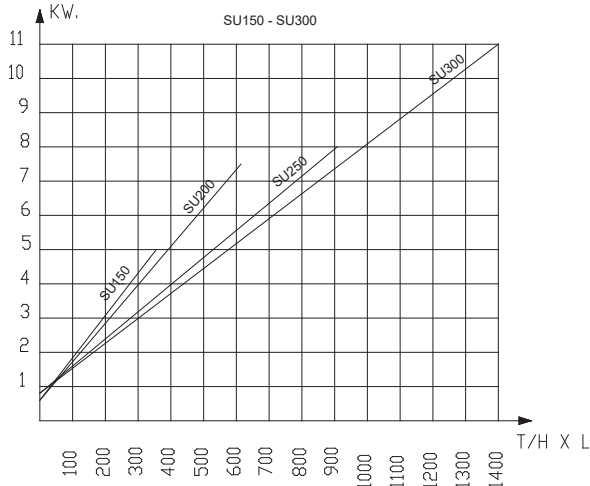
DIMENSIONS								
	SU150	SU200	SU250	SU300	SU350	SU400	SU450	SU500
A	53	53	53	78	78	90	90	90
B	55	55	55	72	112	120	120	120
C	200	200	250	250	275	300	325	350
D	63,5x5	88,9x4,9	88,9x4,9	88,9x4,9	88,9x4,9	114,3x5,4	114,3x5,4	114,3x5,4
d	35	35	35	60	60	80	80	80
E								
F*	150x4/2	200x4/2	250x4/2	300x4/2	350x4/2			
F^						400x5	450x5	500x5
H	3	3	3	3	3	4	4	4
J	224	281	328	382	447	499	549	601
K	150	200	250	300	350	400	450	500
L	2000	2000	2000	2000	2000	2000	2000	2000
M	166	216	266	320	370	420	470	522
N	94	95	132	140	139	129	159	189
O	2	2	2	2	2	2	2	2
P	228	278	328	382	442	496	546	600
R	181	231	284	338	388	440	490	542
S	130	175	225	260	305	315	335	390
T	178	228	278	332	382	436	486	540
V	350	350	450	450	510	560	610	660
W	300	300	400	400	450	500	550	600
X	99	124	149	176	201	228	253	280
Y	13	13	13	13	13	14	14	15
Z	270	320	370	424	504	558	608	662
Kg basis-addition	30	40	50	75	95	135	155	175
Kg/m	30	40	45	50	60	85	95	110

Conveyor type SU - CAPACITY

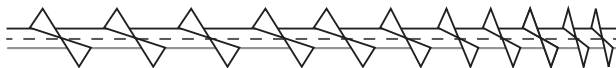
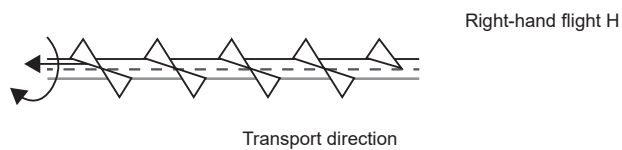
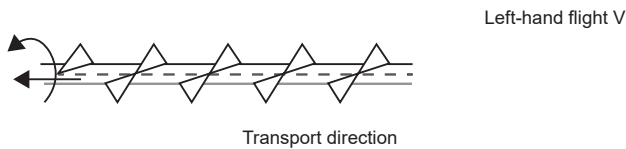
CAPACITY For every 5 degrees inclination, the capacity will drop 10%						
Material	Grain		Flour		Coarser products	
	Max. rpm.	m ³ /h with 50% filling and max rpm.	Max. rpm.	m ³ /h with 40% filling and max. rpm.	Max. rpm.	m ³ /h with 30% filling and max. rpm.
SU 150	320	18	160	7	130	4,5
SU 200	240	32	120	13	95	7,3
SU 250	190	55	95	22	75	13,0
SU 300	160	80	80	32	65	19,5
SU 350	160	132	80	53	65	32,0
SU 400	140	153	70	62	55	36,0
SU 450	130	195	65	78	50	45,0
SU 500	115	250	60	104	45	59,0

SCREW CONVEYOR TYPE SU

Recommended effect diagrams for horizontal conveyor in standard version:



Flights can be delivered as right-hand or left-hand. As standard, the conveyors are delivered as right-hand.



The diagrams are valid for light powder products etc, effect factor 2,3. At strongly wearing material such as sand, salt etc. effect factor 3-6 is used. The diagrams are not valid for special conveyors and extraction conveyors under silos. T/H=Tons/hour - L=Length in meter

Examples of effect factors:

- Effect factor 3,0 – Sawdust
- Effect factor 3,5 – Coconut deposits
- Effect factor 4,0 – Bone meal, cement, gypsum, earth, clay
- Effect factor 5,0 – Fertiliser
- Effect factor 6,0 – Ashes, cinders, sand, salt