

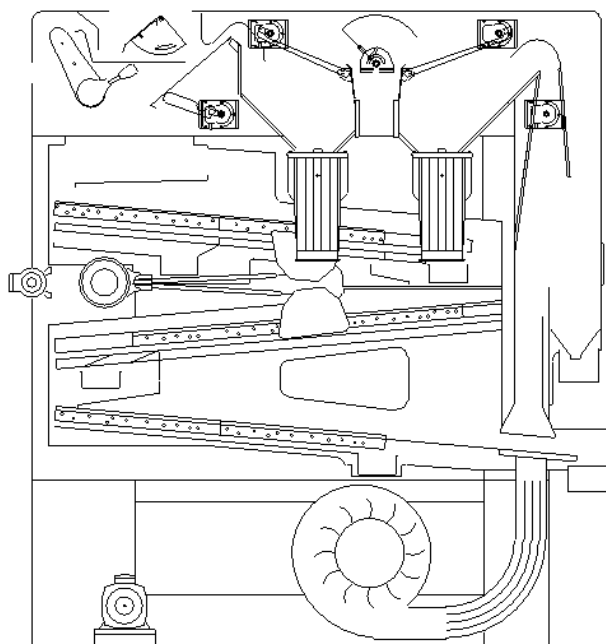
FINE CLEANER

DELTA SUPER 102

Designed for high quality fine cleaning of seeds, malting barley, legumes, grains and garden seeds.

The Delta Super Fine cleaner series has the most advanced air system on the market. This series is suitable for cleaning of all kinds of grain and seed. Ideal for difficult separations.

The Super Fine cleaners include shaker feeder, pre-suction and after-suction system, HMI control system, flexible screen flow and air lifting fan.



PERFORMANCE

Materials	Bulk density t/m ³	Moisture content %	Capacity t/h
Barley	0.68	14	2.2
Clover	0.82	14	1
Coffee, green	0.65	14	2
Maize	0.71	14	1.5–2
Oats	0.51	14	1.5
Peas, common	0.7	14	2
Rapeseed	0.74	7–9	1.5
Rice, paddy	0.51	14	1.5
Rice, white	0.75	14	2
Rye	0.69	14	2.2
Ryegrass	0.3	14	0.4
Sorghum	0.64	14	2.2
Soybeans	0.72	14	2
Sunflower	0.4	7–9	1
Wheat	0.76	14	2.5

Note: Capacities may vary for different impurity and moisture contents.

SCREENS

Screen angle	5°
Screen area, total	3 m ²
Screen size	625×800 mm (6 pcs)

DIMENSIONS

Overall length	3 018 mm
Overall height	3 108 mm
Overall width	1 276 mm

WEIGHT

Weight, empty	1 930 kg
Weight, operating (wheat)	1 970 kg
Weight, choked (wheat)	3 080 kg

OPERATING SPEED

Shaker feeder (shaft)	140–700 rpm
Screens (shaft), fixed speed	280–285 rpm
Screens (shaft), variable speed	260–320 rpm
Aspiration fan	65–750 rpm

ELECTRICAL RATINGS

Motor, shaker feeder	0.75 kW
Motor, screens	1.5 kW
Motor, aspiration fan	1.5 kW
Control panel	110–230 V

AIR SUPPLY AND EXTRACTION

Aspiration volume	4 500 m ³ /h
-------------------	-------------------------

DYNAMIC LOADS

Horizontal load "Ph"	±745 N @ 4.6–4.8 Hz
Vertical load "Pv1" (inlet end)	±305 N @ 4.6–4.8 Hz
Vertical load "Pv2" (outlet end)	±305 N @ 4.6–4.8 Hz

Note: Dynamic loads are for normal operation.

NOISE

Sound pressure level, empty	79.3 dB(A)
-----------------------------	------------

COMPLIANCE

EU machinery legislation	Yes
EU ATEX legislation	Option*
EU food contact legislation	Option*

** Consult your Cimbria dealer for full details.*

ENVIRONMENTAL CONDITIONS

Environment	Indoors
Temperature	From -20°C to +40°C
Altitude	Up to 800 m

SURFACE PROTECTION

Frame and enclosure	Paint (corrosivity category C2; low durability)
---------------------	---

LIFETIME

Intended life limit	20 years
---------------------	----------