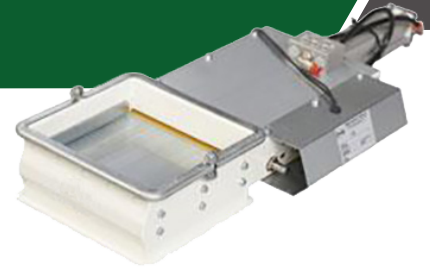


# SLIDING VALVES SKT & SK TYPE Q-16

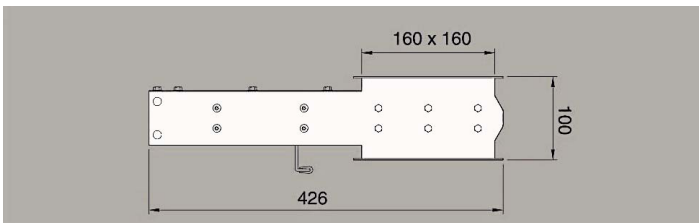


**Sliding valves type SKT** can be installed into a grain spout for the regulation or cutting off of the flow. The sliding valve type SKT is controlled by means of special internal guides ensuring that kernels are not broken. The sliding valve SKT is complete with VULKULAN™ sealing to minimise dust leakage.

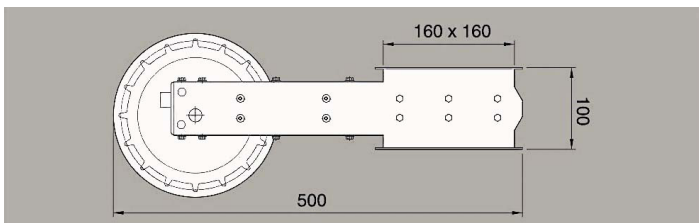
The actuator on the sliding valve type SKT can be manually, motorised and pneumatically operated and is guarded and secured according to the EU machine directive.

The **sliding valves type SK** can be inserted into a grain spout for regulation or cutting off of the flow. The sliding valve is controlled by means of outside guides ensuring that kernels are not broken.

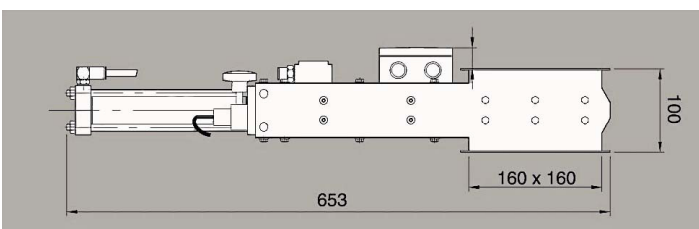
The manually operated and the rack and pinion sliding valve type SK comply with the EU machine directive.



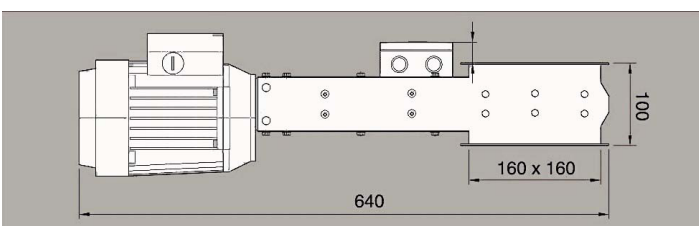
**SKT32** Manual operated  
**SKT33** Manually operated with indication



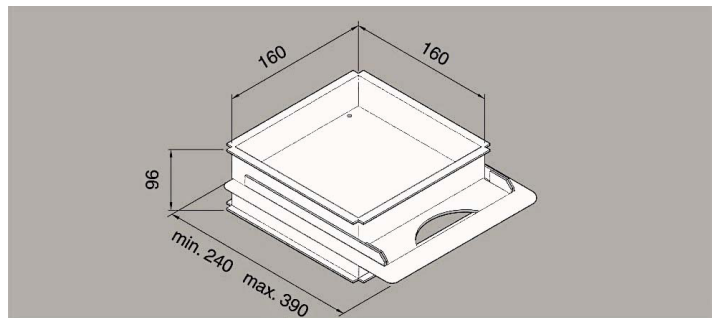
**SKT34** Chain operated  
**SKT35** Chain operated with indication



**SKT37** Pneumatically operated with capact regulation  
**SKT38** Pneumatically operated



**SKT39** Motorised



**SK32** Manually operated

