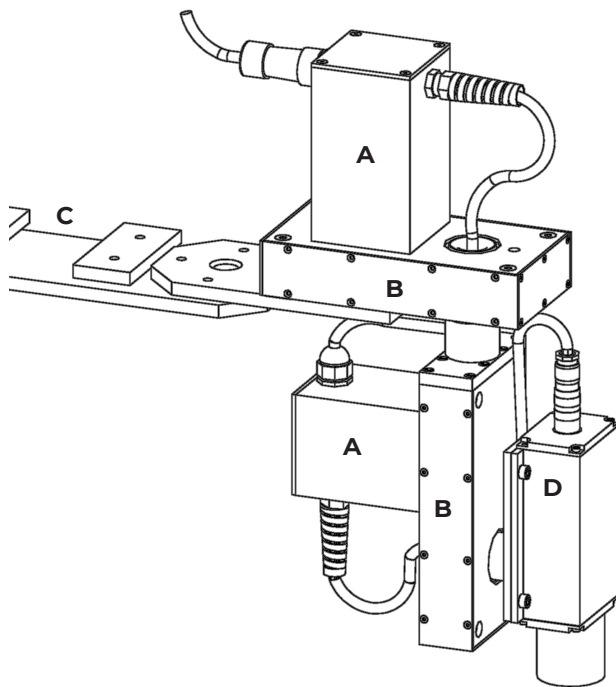
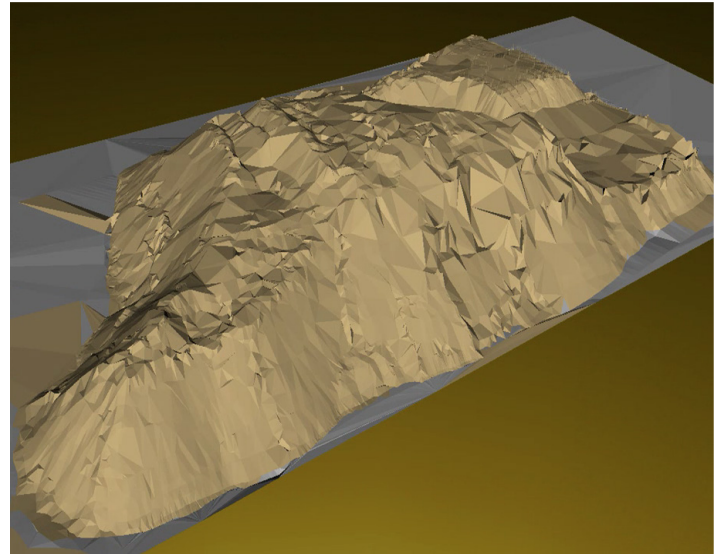


IMS MULTI AXIS SCANNER

The CIMBRIA IMS Multi Axis scanner is specially designed to profile very big grain silo bins and storage bunkers. The unit can operate as a single unit on the IMS software platform or as a group within big storage bunkers where coverage can be overlaid to prevent “blind spots”. Profile scans can be done on a timed schedule or with the Dynamic profiler in the IMS software. The Dynamic profiler compares certain points on the profile against previous movements and manages the profile scans accordingly. All information is recorded into the IMS software where accurate volume is calculated and tonnages are reported.



- A) Mounting housing
- B) Gear housing
- C) Mounting bar
- D) Scanning laser
- E) Power and data conduit



IMS Software RENDER

LASER

| | |
|-----------------------|---|
| Type | 650nm laser diode (Red) |
| Class | Class 2 Conforming to IEC825-1 / EN60825, Class 2 (FDA21 CFR) |
| Output power | < 1 mW |
| Divergence | 0.6 mrad |
| Max. range | 50 M (>100 M with reflective target) |
| Min. range | 200 mm |
| Resolution | 1 mm |
| Supply voltage | 1VDC to 30VDC (Reverse polarity protected) |
| Power usage | <1.5 W |
| Data interface | RS232 - 9600,8,N,1 (ASCII) |
| Operating temperature | -10°C to +60°C |
| Weight | 850 g |
| Protection | IP65 |

SCANNER

| | |
|-------------------|----------------------|
| Tilt deflection | 162° |
| Rotational res | 50, 000PPR |
| Connector | Circular type (IP68) |
| Supply voltage | +24VDC ±10% |
| Power usage | <85VA |
| Data interface | RS232 - 9600,8 N, 1 |
| Operational temp. | 0°C to +40°C |
| Weight | 6.5 kg nett |
| Protection | equ to IP65 |