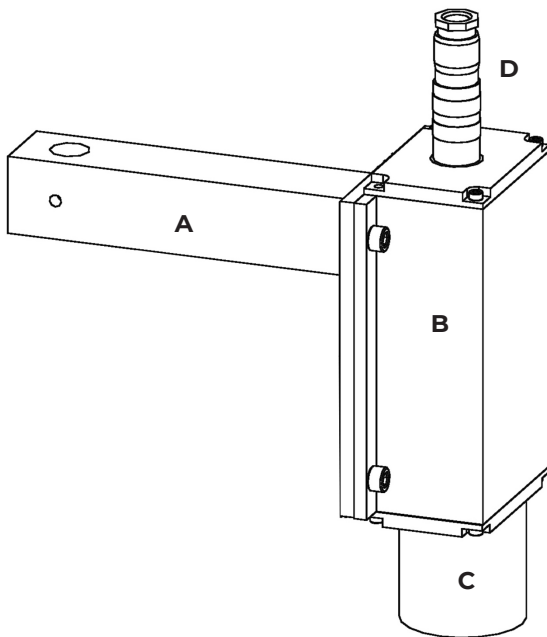


# IMS FIXED LASER

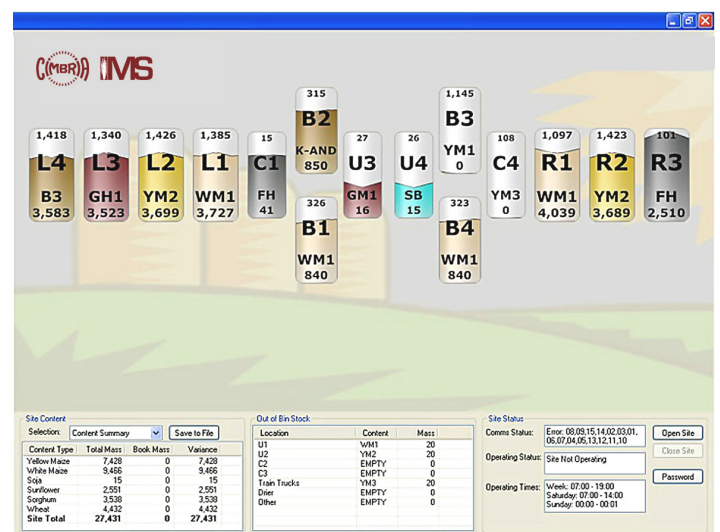
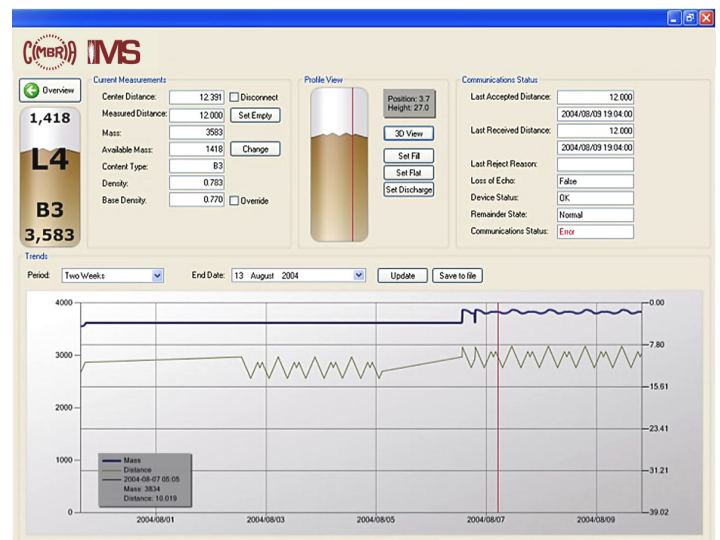
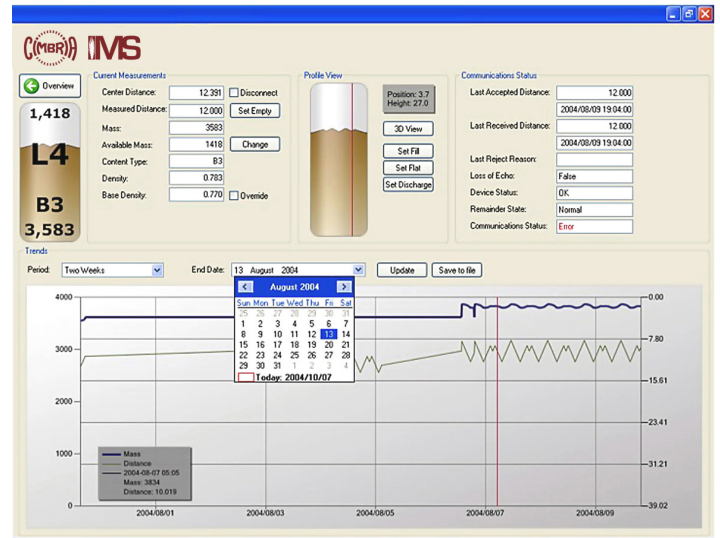
The IMS Fixed Laser is installed in smaller silo bins with diameters less than 15 m to accurately measure commodity levels. The IMS Fixed Laser constantly measures the distance to the grain profile and relay it back to the IMS Software. Dynamic profiler within the IMS Software is used to produce the grain profile based on current measurements and historic movements and measurements.



- A) Mounting bar
- B) Laser housing
- C) Dust cover
- D) Power and data conduit

## LASER

Type	650nm laser diode (Red)
Class	Class 2 Conforming to IEC825-1 / EN60825, Class 2 (FDA21 CFR)
Output power	< 1 mW
Divergence	0.6 mrad
Max. range	50 M (>100 M with reflective target)
Min. range	200 mm
Resolution	1 mm
Supply voltage	1VDC to 30VDC (Reverse polarity protected)
Power usage	<1.5 W
Data interface	RS232 -9600,8,N,1 (ASCII)
Operating temperature	-10°C to +60°C
Weight	850 g
Protection	IP65



IMS screens