

# Data Sheet 518

## IMS SOFTWARE (Standard Features)



### Inventory Management System (IMS).

The IMS from Cimbria is available in three modules: A Basic module with a unique level measurement software developed for the grain industry. (For description of the other modules please see Data sheet 518.1).

The standard software is unique because it has been developed 100% for the grain industry and issues such as different size and shapes of storage bins (or bulk), continues changes in the grain profiles and different discharge outlets, that normally effects regular level measurement systems has been taken into consideration, which is quiet unique.

Each system is custom designed according to customer needs and special plant specifications, this in order to make the system more accurate than traditional system. The accuracy is very high in most cases higher than 99 per cent. The accuracy will depend on the storage facility and of which configuration of lasers is used in the facility. (Option of lasers: please see data sheets 517.0, 517.1 and 517.2).

### Features in the standard software:

#### Layout and complete overview

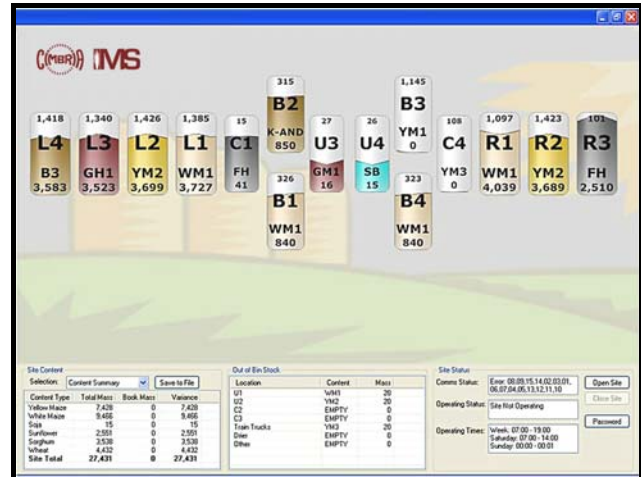
The front page display the bin/bulk content of the whole facility, Further to this it possible to identify bin/bulk grain profile of each individual storage bin/bulk.

#### Single Silo overview

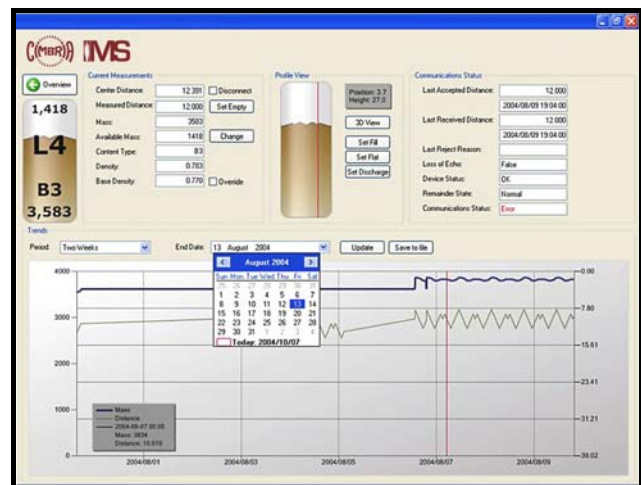
The page for individual bin/bulk content information about standard and actual density, mass content. Available mass (not used cap), grain profile for the bin, display of statistic for the bin/bulk for any given period of time.

#### Reports

Individual reports can be designed by the user since all historic data is available via Macros in Excel to interrogate the database. For more software options and integration with transactional data then please see Data sheet 518.1.



IMS Plant Overview Page



IMS Single Silo Overview Page

Copyright © - The right to alterations is reserved

