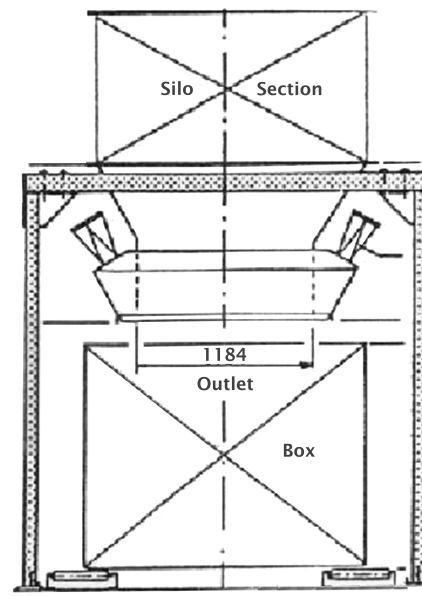
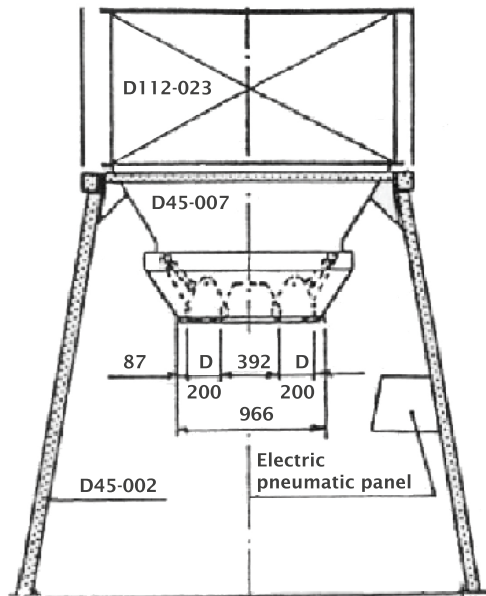


Container Filling Unit type 186

GENERAL

Brand	Cimbria
Designation	Container Filling Unit
Model	186
Use	Industry



The Cimbria Container Filling Units type 186 series is widely used within the seed and grain industry for filling seed container of either steel or wooden construction.

The Container Filling Unit is constructed entirely in steel and consists of a sector gate section with aspiration connection.

The gate can be manually operated, pneumatic or motor operated. Above the Container Filling Unit there will be a buffer bin holding a required amount of seed.

Technical Data of container filling unit

Type	Execution	Aspiration requirements
186.1	Manual operated	2 x 1 200 m/hour
186.1	Motor operated	2 x 1 200 m/hour
186.1	Pneumatic operated	2 x 1 200 m/hour

Container Boxes

Container boxes are also available in steel or wooden construction in the following sizes.

Technical Data of container boxes

Type	L	W	H
A	1 170 / 1 320	1 200	1 450 / 1 320
B	1 170 / 1 320	1 550	1 450 / 1 320
C	1 170 / 1 320	1 900	1 450 / 1 320
D	1 200	2 200	1 220

