



DIRECT HEATING WITH OIL

HOT AIR GENERATOR TYPE VD

DIMENSION

The VD furnace is available in several modules to make it suitable for the full range of Cimbria Dryers.

Each model can be extended with one or more sections, enabling the combustion chamber to also be extended and the heat capacity can therefore be increased. The extension is called A (for example VD-3AA).

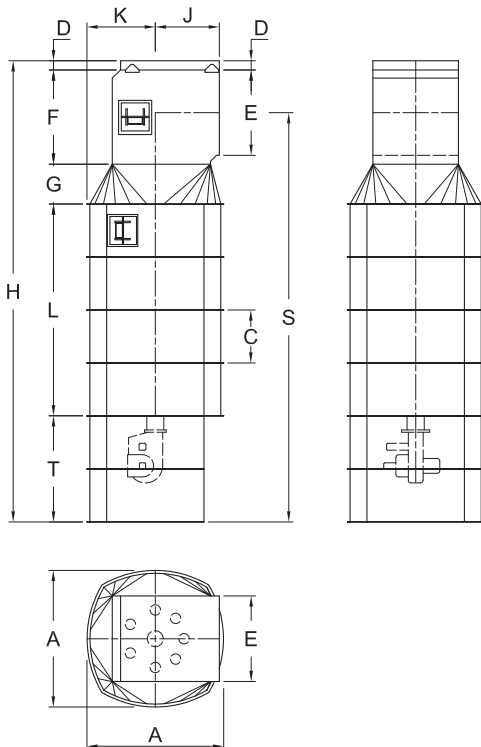
Table 1: Measurements vertical VD furnace

	VD-3	VD-4	VD-5
A	1 520	1 810	2 096
C	832	940	990
D	160	160	160
E	1 050	1 200	1 350
F	1 200	1 355	1 550
G	350	450	600
H	5 874	6 669	7 264
J	827	930	1 075
K	760	905	1 048
L	2 496	2 820	2 970
S	5 189	5 909	6 429
T	1 668	1 884	1 984

All measurements in mm.

Each time a furnace is extended with 1 section, the total height is thereby extended with a C module to H, L and S.

Figure 1: Vertical VD furnace



When the VD furnace is installed vertically the bottom part of the outer cover where the burner is fitted is open towards the dryer which provides access to the burner.

Table 2: Measurements horizontal VD furnace

	VD-3	VD-4	VD-5
A	1 520	1 810	2 096
B	1 100	1 320	1 540
C	832	940	990
D	160	160	160
E	1 050	1 200	1 350
F	1 200	1 355	1 550
G	350	450	600
J	827	930	1 075
K	800	960	1 100
L	2 496	2 820	2 970
M	1 064	1 280	1 380
N	600	600	600
P	116	170	195
Q	1 560	1 865	2 148
R	1 627	1 890	2 175
S	5 189	5 909	6 429
U	965	965	1 180

All measurements in mm.

Each time a furnace is extended with 1 section, the total length is thereby extended with a C module to M, L and S.

Figure 2: Horizontal VD furnace

