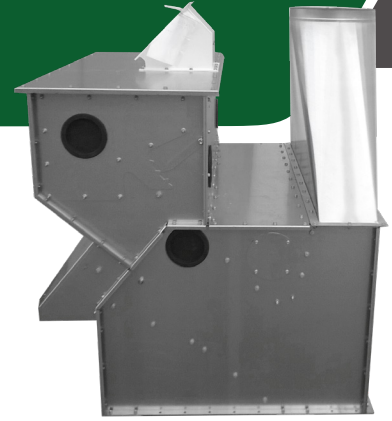
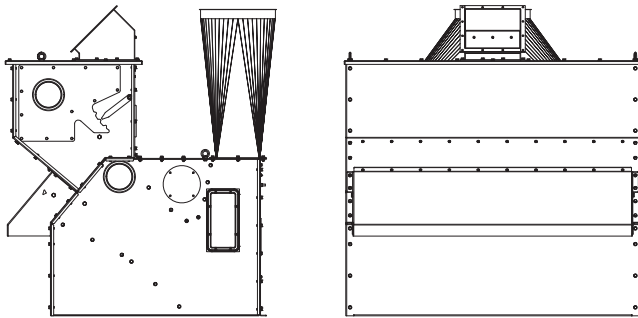


ASPIRATOR CR-163.15



GENERAL

Brand	Cimbria
Designation	Aspirator
Model	CR-163.15
Use	Industry
Application	Removal of dust, chaff, and other light particles from cereal grains, pulses, oilseeds etc.



ENVIRONMENTAL CONDITIONS

Environment	Indoors
Temperature	From -40°C to +70°C
Altitude	Any

SURFACE PROTECTION

Casing	Pre-galvanising
--------	-----------------

LIFETIME

Intended life limit	20 years
---------------------	----------

PERFORMANCE

Materials	Bulk density t/m ³	Moisture content %	Capacity t/h
Barley	0.68	20	200
Maize	0.71	20	200
Malt	0.35	4	140
Peas, common	0.70	20	180
Rice, paddy	0.51	20	100
Rye	0.69	20	200
Sorghum	0.70	20	200
Soybeans	0.70	20	180
Sunflower	0.40	14	100
Wheat	0.76	20	200

Note: Capacities are for material with up to 10% impurities. Capacities may vary for different impurity and moisture contents.

DIMENSIONS

Overall length	1 596 mm
Overall height	1 645 mm
Overall width	1 594 mm

WEIGHT

Weight, empty	450 kg
Weight, operating (wheat)	730 kg
Weight, choked (wheat)	1 450 kg

AIR SUPPLY AND EXTRACTION

Aspiration volume	7 500–12 000 m ³ /h
-------------------	--------------------------------