

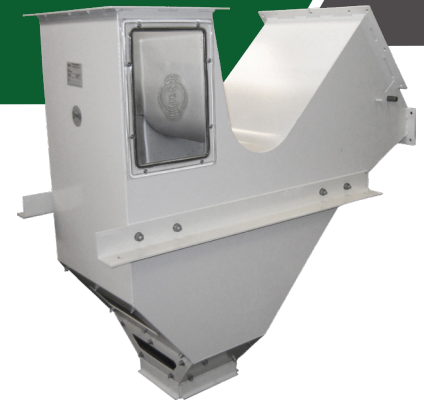


PROCESSING

# ASPIRATOR CR-163.06

## GENERAL

Brand	Cimbria
Designation	Aspirator
Model	CR-163.06
Use	Industry
Application	Removal of dust, chaff, and other light particles from cereal grains, pulses, oilseeds etc.



## AIR SUPPLY AND EXTRACTION

Aspiration volume	4 500 m <sup>3</sup> /h
-------------------	-------------------------

## ENVIRONMENTAL CONDITIONS

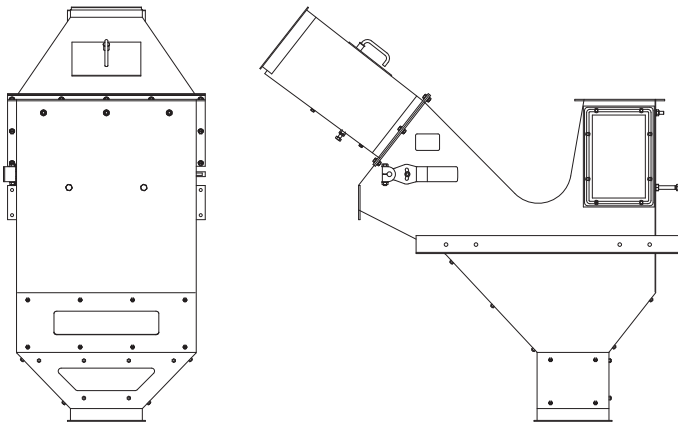
Environment	Indoors
Temperature	From -40°C to +70°C
Altitude	Any

## SURFACE PROTECTION

Casing	Paint (corrosivity category C2; low durability)
--------	---

## LIFETIME

Intended life limit	20 years
---------------------	----------



## PERFORMANCE

Materials	Bulk density t/m <sup>3</sup>	Moisture content %	Capacity t/h
Barley	0.68	20	60
Maize	0.71	20	60
Malt	0.35	4	42
Peas, common	0.7	20	54
Rice, paddy	0.51	20	30
Rye	0.69	20	60
Sorghum	0.64–0.81	20	60
Soybeans	0.69–0.77	20	54
Sunflower	0.47–0.65	14	30
Wheat	0.76	20	60

Note: Capacities are for material with up to 10% impurities. Capacities may vary for different impurity and moisture contents.

## DIMENSIONS

Overall length	1 402 mm
Overall height	1 384 mm
Overall width	674 mm

## WEIGHT

Weight, empty	85 kg
Weight, operating (wheat)	170 kg
Weight, choked (wheat)	360 kg